

Spring Cup 2024



Spring Cup 2024 / Pavasario Taurė 2024

20 – 21 April 2024

Lietuva  Aukštadvaris  Rangava

BULLETIN No.1



Organizers:

Orienteering Club:
Event director:
Head judge:
Secretaries:
Map, courses:
IOF Event adviser:

„Medeina“
Artūras Vaitiekus
Marijonas Gipas
Jonas Vytautas Gvildys
Rimvydas Kutka
Vitalijus Paulauskas



Contacts:

OK „Medeina“
Artūras Vaitiekus
Rimvydas Kutka
www.springcup.lt

okmedeina@gmail.com
tel.+370 686 11053
tukmir@gmail.com



Competition programme:

2024-04-20 Middle course (WRE):

Arriving and registration at competition centre 12:00-13:30

Opening ceremony: 13:30

Starts from 14:00

2024-04-21 Long distance (WRE):

Arriving and registration at competition centre 10:00-11:30

Starts 12:00

Prize giving ceremony: 15:30

Event closing ceremony 16:00



Event location:

In the south west of town Aukštadvaris, Trakai district

<https://dbsportas.lt/en/varz/2024015>



Competition area is restricted for participants!



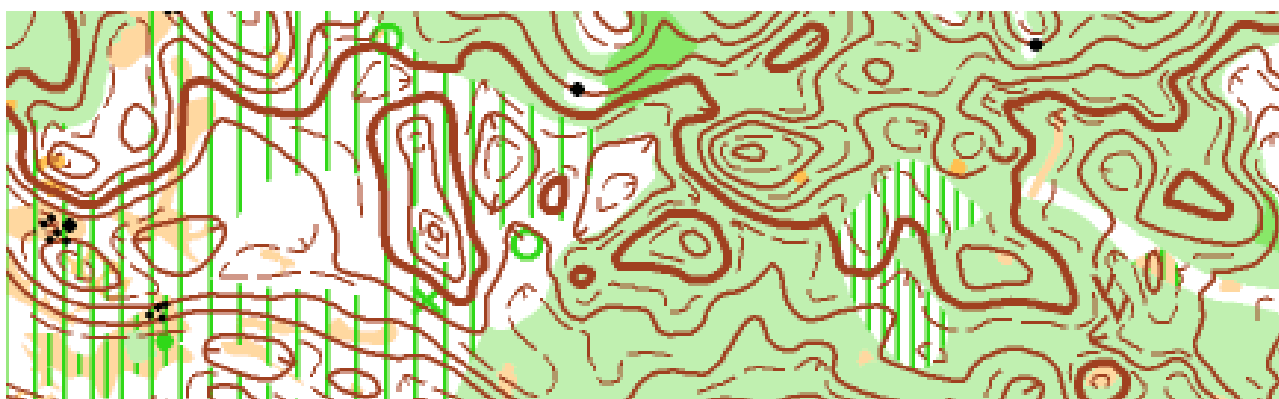
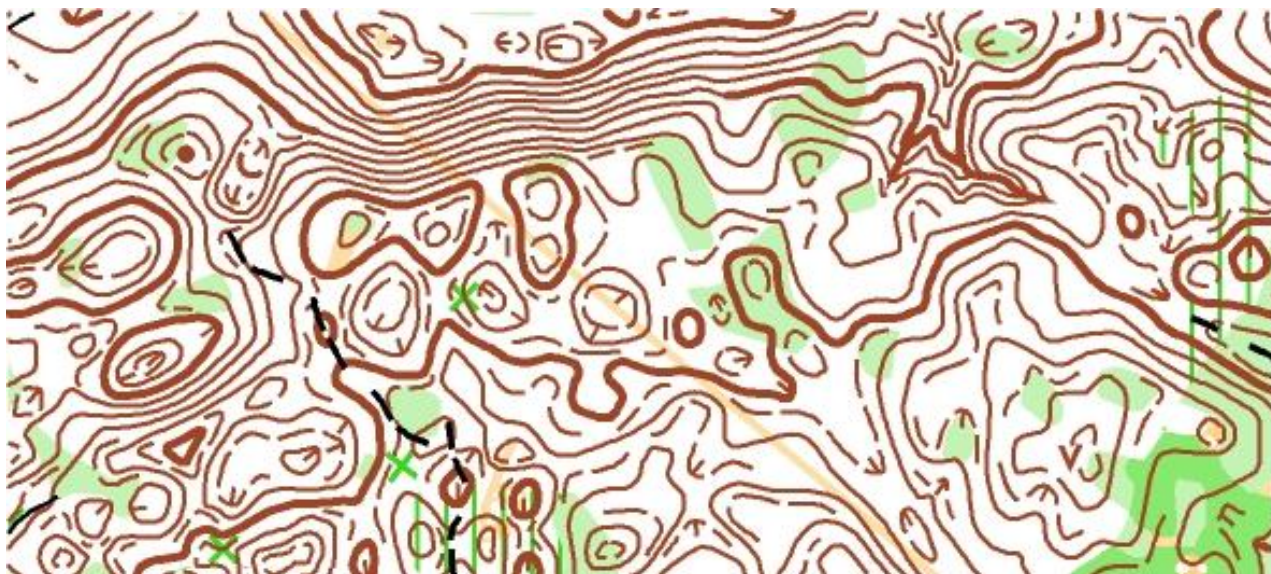
Terrain / Maps:

The map was created in the autumn of 2023

Old Map:Aukštadvaris (Ravai, Rangava, Šafarnė) 2014m [LOSF1411](#)

The area on the right side of Verknė river is bounded by the roads "Aukštadvaris-Vyšniūnai, Karapolis-Zabarauskai, and the Verknė river. The area has a lot of small details. Ascent on one slope up to 40 m. There are a lot of fallen trees. Dangerous places: Springs of Šafarnė and Rangava. The area is part of the Aukštadvaris regional park.

For all classes maps will be printed on waterproof paper. Descriptions will be printed directly on the map as pictogram, according to IOF standards. Spare control descriptions will be available at the pre-start corridor.



Day 1 2024-04-20 (WRE) – Midle course.

Map scale 1:10 000, contour interval 2,5 m. for all classes. No refreshment points in the forest!

Map scale 1:7 500, contour interval 2,5 m – for classes M/W12,14,60+

Map scale 1:3 000, contour interval 2,5 m – for classes M/W10

Start intervals 2 min. for M/W classes, the control time limit 120 min.

For WRE classes, start lists will be drawn up according to IOF rules, i.e. according to ranks on 10.04.2023. 12.04.2024. **There will be a quarantine zone for WRE runners in the model map area.** At the entrance to the quarantine zone, numbers and GPS transmitters will be issued to some of the WRE runners.

Day 2 2024-04-21 (WRE) – Long course

Map scale 1:10 000, contour interval 2,5m. for all classes . There will be refreshment points in forest.

Map scale 1:7 500, contour interval 2,5 m - for classes M/W12,14,60+

Map scale 1:3 000, contour interval 2,5 m - for classes M/W10

Start intervals 3 min. for M/W classes, the control time limit 180 min.

Forecasting winning times for classes M/W – 80-90 minutes. For WRE classes, the start lists will be drawn up according to the results of the middle course: the winner of the middle course will run last.



Classes:

W21 (WRE), W8, W10, W12, W14, W16, W18, W20, W21A, W21B (Easy), W35, W40, W45, W50, W55, W60, W65, W70, W75, W80, W23 (the same as W21)
M21 (WRE), M8, M10, M12, M14, M16, M18, M20, M21A, M21B (Easy), M35, M40, M45, M50, M55, M60, M65, M70, M75, M80, M23 (the same as M21)
OPEN-1, OPEN-2, OPEN-3.



Preliminary courses:

Preliminary courses will be published in next bulletin. Detailed courses parameters will be published before competition day.



MW8-10

W8, M8 - marked course is drawn with a red line on the map, controls are on the marking. There will be special maps and a start not far from the competition center.

W10, M10 - marked course, controls are on the markings. Participants can run without marking. There will be a separate start not far from the center of the competition, the finish together with all groups. Punching system- SI.



Punching system:

SPORTident electronic punching system will be used for all groups. Those who do not have an SI card will have the opportunity to rent one from the competition organizers. When renting an SI card from the organizers of the competition and not returning the card to the organizers, a fine for the value of the card is paid.



Entries:

Entries for all classes is through on the DBsportas.lt website.

<https://dbsportas.lt/en/varz/2024015>

You can make changes and cancel registration on registration portal dbsportas.lt free of charge until 16 of April 2024!

After this deadline, the entry fee will be not refunded to those who want to cancel or can't to attend in the competition.

All payments will be processed through dbsportas.lt website with plugin to Paysera Checkout platform.

Participants who have been made registration for M/W 10 -16 courses, but didn't attend, have to pay a fine equal to half of the entry fee!.

Organizers will be ask extra handling fee 2 Eur if participant will decide to pay in cash at the event center .

The last entry dead-line is 13 April 2024, 23:59 min. After this deadline all entries will be closed. Incomplete entries – not paid etc. will be canceled and attendee will be rejected from the list. By entering the competition, participants agree that their and their team members' surnames, first names, year of birth, team name and results would be published on the DBsportas.lt website. The year of birth is not shown next to the results. Persons entering other people for the competition must ensure that they have received consent from the registered persons to publish the above- mentioned information on the aforementioned website.

OPEN-1, OPEN-2, OPEN-3- it is possible to enter on competition day.

Athletes from Russia and Belarus are banned from participating in international orienteering competitions Spring cup.

СЛАВА УКРАЇНІ!



Entry fees:

Classes	Early till 4 Feb2024 23:59	Regular till 4 Apr 2024 23:59	Late till 13 Apr 2024 23:59	Add-on if one day entry only	SI rent for both days
MW21, 23	30	34	44	4	3
MW21(A,B), 35,40,45,50,55,60	26	32	38	4	3
MW20,65+	24	28	32	3	2
MW16-18	16	18	22	2	2
MW12-14	10	12	14	2	1
MW8-10	8	10	12	1	1
OPEN 1,2,3			12€/day		3

Prices are in euros (EUR). The price is based on the payment date.

Aukštadvaris regional park visitor ticket 1 Eur. Will be able to purchase in event center or online :

<https://saugoma.lt/en/state-park-visitor-ticket>



Prizes:

Classes winners will be awarded prizes for the total of both days. 6 places will be awarded in WRE classes! WM classes 8 and 10 will be awarded each day at the finish.



Complains:

Complaints about the start lists (entries) may be made at least 1 hour before the start of the first competitor.

Complaints about the conduct of the event, including the results, must be submitted to the organisers as soon as possible, but not later than 20 minutes after the finish of the athlete who initiated the complaint. If the complaint is submitted later, it may only be considered if there are important exceptional circumstances which must be stated in the complaint. Complaints shall be submitted in writing to the Chief Referee or Secretary at the venue (finish tent).



Other:

All participants enter the Competition of their own free will, without being forced to do so, and assume all risks associated with their participation in the Competition (including any health problems and injuries) and undertake not to make any claims against the Organisers in respect thereof. Paramedic at the finish tent. **Athletes may take GPS-equipment (watches) on the course, which cannot display maps on the monitor. Phones are not allowed.**

By registering for the event, you agree that your personal data (without year of birth) will be published on <https://dbsportas.lt/en/varz/2024015> . Participants agree to be photographed and filmed and their photographs and video footage may be used for publicity purposes..



Accomodation:

<http://www.trakai-visit.lt/en/accommodation>

<http://www.atostogoskaime.lt/lt/kaimo-turizmas/traku-rajone>



Event sponsors:



BASEINŲ CENTRAS[®]



baseinai@yahoo.com



UAB DIAGNOSTINĖS SISTEMOS

Katvarijų sodų 1-oji g. 2, LT-08315 Vilnius

